

NOBLE QUALITY  
AHEAD OF FASHIONS



Office Skopje:  
- Street Apostol Guslarot 1A - Skopje  
Tel. No.: 00389(0)2 329 8 130  
Office Bitola:  
- Street Brakja Mingovi 18 - Bitola  
Tel. No.: 00389(0)47 203 330  
e-mail: [frinko@t-home.mk](mailto:frinko@t-home.mk)  
web: [www.frinko.mk](http://www.frinko.mk)



# Wine Cooler



# Contents

CE CB ETL RoHS



6 bottles

KWS-6E  
KWS-6C



8 bottles

KWS-8E  
KWS-8C  
KWS-8F  
KWS-8C1



12 bottles

KWS-12E  
KWS-12C  
KWD-12CD  
KWD-12C  
KWS-12T1  
KWS-12T  
KWS-12C1



14 bottles

KWS-14C1  
KWD-14C1  
KWD-14CD1



16 bottles

KWS-16R  
KWS-16F  
KWS-16C  
KWD-16C  
KWD-16CD  
KWS-16C1  
KWD-16C1  
KWD-16CD1



18 bottles

KWD-18T  
KWD-18C  
KWS-18C1  
KWD-18C1  
KWD-18CD1  
KWD-18CD2



21 bottles

KWD-21T  
KWD-21C  
KWD-21C1  
KWD-21CD



24 bottles

KWD-24CD



27 bottles

KWD-27T  
KWD-27C



30 bottles

KWS-30T  
KWS-30C



WINE COOLER  
WINE CHILLER  
WINE REFRIGERATOR

CELLA FRIGORIFERA PER VINO  
VINOTECA  
Cella frigorifera per vino

weintemperierschrank  
Cava para vinos  
ワインクーラー



Compact  
Size



Low Noise



No Vibration



Forced  
Air-convection



Constant  
Humidity



Constant  
Temperature



Environmental  
Friendly

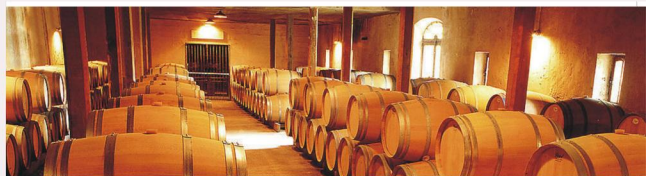
## 6 Bottles Series

### KWS-6E



16L for loading of 6 wine bottles  
LED display with touch sensitive keys  
Temperature range from 7-18°C  
Double pane glass door  
Auto defrost  
Soft interior lighting with ON/OFF switch  
No compressor, super low noise  
No vibration-bottle sediment is not disturbed  
No refrigerant, environmental friendly  
Unit dimension: W254\*D505\*H365  
Packing dimension: W295\*D555\*H415  
Loading quantity: 434pcs/20'; 904pcs/40'; 1030pcs/40HQ  
Approval: CB, CE, GS, RoHS, ERP, ETL

### KWS-6C



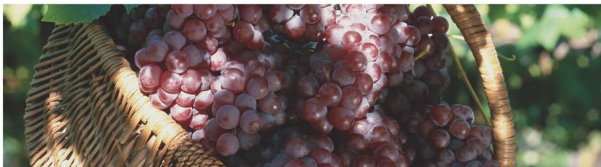
# 8 Bottles Series

## KWS-8E



23L for loading of 8 wine bottles  
LED display with touch sensitive keys  
Temperature range from 7~18℃  
Double pane glass door  
Auto defrost  
Soft interior lighting with ON/OFF switch  
No compressor, super low noise  
No vibration-bottle sediment is not disturbed  
No refrigerant, environmental friendly  
Unit dimension: W254\*D505\*H450  
Packing dimension: W295\*D555\*H495  
Loading quantity: 352pcs/20'; 728pcs/40'; 836pcs/40HQ  
Approval: CB, CE, GS, RoHS, ETL

## KWS-8C



# 8 Bottles Series



## KWS-8F



23L for loading of 8 wine bottles  
LED display with touch sensitive keys  
Temperature range from 11~18℃  
Double pane glass door  
Auto defrost  
Soft interior lighting with ON/OFF switch  
No compressor, super low noise  
No vibration-bottle sediment is not disturbed  
No refrigerant, environmental friendly  
Unit dimension: W420\*D480\*H280  
Packing dimension: W465\*D572\*H330  
Loading quantity: 359pcs/20'; 723pcs/40'; 830pcs/40HQ  
Approval: CB, CE, GS, RoHS, ERP, ETL

## KWS-8C1



# 12 Bottles Series

## KWS-12E



33L for loading of 12 wine bottles  
LED display with touch sensitive keys  
Temperature range from 11~18℃  
Double pane glass door  
Auto defrost  
Soft interior lighting with ON/OFF switch  
No compressor, super low noise  
No vibration-bottle sediment is not disturbed  
No refrigerant, environmental friendly  
Unit dimension: W254\*D505\*H620  
Packing dimension: W295\*D555\*H665  
Loading quantity: 264pcs/20'; 550pcs/40'; 635pcs/40HQ  
Approval: CB, CE, GS, RoHS, ETL

## KWS-12C



## KWD-12CD

Double doors



## KWD-12C



33L dual zones for loading of 12 wine bottles  
6-bottles upper&6-bottles lower  
LED display with touch sensitive keys  
Temperature range from 7~18℃ for both zones  
Auto defrost  
Double pane glass doors  
Soft interior lighting with ON/OFF switch  
No compressor, super low noise  
No vibration-bottle sediment is not disturbed  
No refrigerant, environmental friendly  
Unit dimension: W254\*D505\*H620  
Packing dimension: W295\*D555\*H665  
Loading quantity 264pcs/20'; 550pcs/40'; 635pcs/40HQ  
Approval: CB, CE, GS, RoHS, ETL



# 12 Bottles Series

# 14 Bottles Series



33L for loading of 12 wine bottles  
LED display with touch sensitive keys  
Temperature range from 11~18℃  
Double pane glass door  
Auto defrost  
Soft interior lighting with ON/OFF switch  
No compressor, super low noise  
No vibration-bottle sediment is not disturbed  
No refrigerant, environmental friendly  
Unit dimension: W345\*D480\*H480  
Packing dimension: W392\*D532\*H510  
Loading quantity: 275pcs/20'; 560pcs/40'; 630pcs/40HQ  
Approval: CB, CE, GS, RoHS, ERP, ETL



NOBLE QUALITY  
AHEAD OF FASHIONS

## KWS-12T1

Integrative door



## KWS-12T



## KWS-12C1



## KWS-14C1

40L for loading of 14 wine bottles  
LED display with touch sensitive keys  
Temperature range from 7~18℃  
Double pane glass door  
Auto defrost  
Soft interior lighting with ON/OFF switch  
No compressor, super low noise  
No vibration-bottle sediment is not disturbed  
No refrigerant, environmental friendly  
Unit dimension: W254\*D505\*H705  
Packing dimension: W295\*D555\*H750  
Loading quantity: 195pcs/20'; 414pcs/40'; 525pcs/40HQ  
Approval: CB, CE, GS, RoHS, ETL



## KWD-14C1

40L dual zones for loading of 14 wine bottles  
LED display with touch sensitive keys  
Temperature range from 7~18℃ upper/11~18℃ lower  
Double pane glass door  
Auto defrost  
Soft interior lighting with ON/OFF switch  
No compressor, super low noise  
No vibration-bottle sediment is not disturbed  
No refrigerant, environmental friendly  
Unit dimension: W254\*D505\*H705  
Packing dimension: W295\*D555\*H750  
Loading quantity: 195pcs/20'; 414pcs/40'; 525pcs/40HQ  
Approval: CB, CE, GS, RoHS, ETL



## KWD-14CD1

40L dual zones for loading of 14 wine bottles  
Double doors, 6-bottles upper/8-bottles lower  
LED display with touch sensitive keys  
Temperature range from 7~18℃ for both zones  
Auto defrost  
Double pane glass doors  
Soft interior lighting with ON/OFF switch  
No compressor, super low noise  
No vibration-bottle sediment is not disturbed  
No refrigerant, environmental friendly  
Unit dimension: W254\*D505\*H705  
Packing dimension: W295\*D555\*H750  
Loading quantity: 195pcs/20'; 414pcs/40'; 525pcs/40HQ  
Approval: CB, CE, GS, RoHS, ETL

# 16 Bottles Series

## KWS-16R



46L for loading of 16 wine bottles  
Big LED display with easy touch buttons  
Temperature range from 11~18°C  
Double pane glass door  
Auto defrost  
Soft interior lighting with ON/OFF switch  
No compressor, super low noise  
No vibration-bottle sediment is not disturbed  
No refrigerant, environmental friendly  
Unit dimension: W420\*D480\*H520  
Packing dimension: W460\*D532\*H560  
Loading quantity: 215pcs/20'; 384pcs/40'; 499pcs/40HQ  
Approval: CB, CE, GS, RoHS, ETL

## KWS-16F



46L for loading of 16 wine bottles  
LED display with touch sensitive keys  
Temperature range from 11~18°C  
Double pane glass door  
Auto defrost  
Soft interior lighting with ON/OFF switch  
No compressor, super low noise  
No vibration-bottle sediment is not disturbed  
No refrigerant, environmental friendly  
Unit dimension: W420\*D480\*H520  
Packing dimension: W460\*D532\*H560  
Loading quantity: 215pcs/20'; 384pcs/40'; 499pcs/40HQ  
Approval: CB, CE, GS, RoHS, ERP, ETL

## KWS-16C



# 16 Bottles Series



## KWD-16C

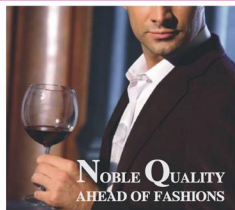
46L dual zones for loading of 16 wine bottles  
8-bottles upper&8-bottles lower  
LED display with touch sensitive keys  
Temperature range from 11~18°C upper/7~18°C lower  
Auto defrost  
Double pane glass doors  
Soft interior lighting with ON/OFF switch  
No compressor, super low noise  
No vibration-bottle sediment is not disturbed  
No refrigerant, environmental friendly  
Unit dimension: W420\*D480\*H520  
Packing dimension: W460\*D532\*H560  
Loading quantity: 215pcs/20'; 384pcs/40'; 499pcs/40HQ  
Approval: CB, CE, GS, RoHS, ETL



## KWD-16CD

46L dual zones for loading of 16 wine bottles  
Double doors, 8-bottles upper&8-bottles lower  
LED display with touch sensitive keys  
Temperature range from 7~18°C for both zones  
Auto defrost  
Double pane glass doors  
Soft interior lighting with ON/OFF switch  
No compressor, super low noise  
No vibration-bottle sediment is not disturbed  
No refrigerant, environmental friendly  
Unit dimension: W420\*D480\*H520  
Packing dimension: W460\*D532\*H560  
Loading quantity: 215pcs/20'; 384pcs/40'; 499pcs/40HQ  
Approval: CB, CE, GS, RoHS, ETL

# 16 Bottles Series



## KWS-16C1

46L for loading of 16 wine bottles  
LED display with touch sensitive keys  
Temperature range from 11~18°C  
Double pane glass door  
Auto defrost  
Soft interior lighting with ON/OFF switch  
No compressor, super low noise  
No vibration-bottle sediment is not disturbed  
No refrigerant, environmental friendly  
Unit dimension: W254\*D505\*H790  
Packing dimension: W295\*D555\*H835  
Loading quantity:  
163pcs/20'; 343pcs/40'; 441pcs/40HQ  
Approval: CB, CE, GS, RoHS, ETL



## KWD-16C1

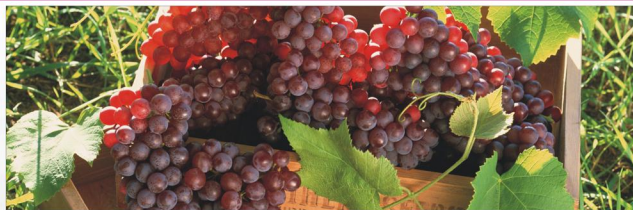
46L dual zones for loading of 16 wine bottles  
8-bottles upper&8-bottles lower  
LED display with touch sensitive keys  
Temperature range from 11~18°C upper/  
7~18°C lower  
Double pane glass door  
Auto defrost  
Soft interior lighting with ON/OFF switch  
No compressor, super low noise  
No vibration-bottle sediment is not disturbed  
No refrigerant, environmental friendly  
Unit dimension: W254\*D505\*H790  
Packing dimension: W295\*D555\*H835  
Loading quantity:  
163pcs/20'; 343pcs/40'; 441pcs/40HQ  
Approval: CB, CE, GS, RoHS, ETL



## KWD-16CD1

46L dual zones for loading of 16 wine bottles  
Double doors, 8-bottles upper&8-bottles lower  
LED display with touch sensitive keys  
Temperature range from 7~18°C for both zones  
Auto defrost  
Double pane glass doors  
Soft interior lighting with ON/OFF switch  
No compressor, super low noise  
No vibration-bottle sediment is not disturbed  
No refrigerant, environmental friendly  
Unit dimension: W254\*D505\*H790  
Packing dimension: W295\*D555\*H835  
Loading quantity:  
163pcs/20'; 343pcs/40'; 441pcs/40HQ  
Approval: CB, CE, GS, RoHS, ETL

# 18 Bottles Series



## KWD-18T



55L dual zones for loading of 18 wine bottles  
6-bottles upper&12-bottles lower  
LED display with touch sensitive keys  
Temperature range from 7~18°C for upper zone,  
and 11~18°C for lower zone  
Double pane glass door  
Auto defrost  
Soft interior lighting with ON/OFF switch  
No compressor, super low noise  
No vibration-bottle sediment is not disturbed  
No refrigerant, environmental friendly  
Unit dimension: W345\*D505\*H718  
Packing dimension: W400\*D570\*H767  
Loading quantity: 170pcs/20'; 351pcs/40'; 407pcs/40HQ  
Approval: CB, CE, GS, RoHS, ETL

## KWD-18C





## KWD-18C1

55L dual zones for loading of 18 wine bottles  
LED display with touch sensitive keys  
Temperature range from 7-18°C upper/11-18°C lower  
Double pane glass door  
Auto defrost  
Soft interior lighting with ON/OFF switch  
No compressor, super low noise  
No vibration-bottle sediment is not disturbed  
No refrigerant, environmental friendly  
Unit dimension: W254\*D505\*H875  
Packing dimension: W295\*D555\*H920  
Loading quantity: 162pcs/20'; 340pcs/40'; 429pcs/40HQ  
Approval: CB, CE, GS, RoHS, ETL



## KWS-18C1

55L for loading of 18 wine bottles  
LED display with touch sensitive keys  
Temperature range from 11-18°C  
Double pane glass door  
Auto defrost  
Soft interior lighting with ON/OFF switch  
No compressor, super low noise  
No vibration-bottle sediment is not disturbed  
No refrigerant, environmental friendly  
Unit dimension: W254\*D505\*H875  
Packing dimension: W295\*D555\*H920  
Loading quantity:  
162pcs/20'; 340pcs/40'; 429pcs/40HQ  
Approval: CB, CE, GS, RoHS, ETL



## KWD-18CD1

55L dual zones for loading of 18 wine bottles  
Double doors, 6-bottles upper&12-bottles lower  
LED display with touch sensitive keys  
Temperature range from 7-18°C upper/11-18°C lower  
Auto defrost  
Double pane glass doors  
Soft interior lighting with ON/OFF switch  
No compressor, super low noise  
No vibration-bottle sediment is not disturbed  
No refrigerant, environmental friendly  
Unit dimension: W254\*D505\*H875  
Packing dimension: W295\*D555\*H920  
Loading quantity:  
162pcs/20'; 340pcs/40'; 429pcs/40HQ  
Approval: CB, CE, GS, RoHS, ETL



## KWD-18CD2

55L dual zones for loading of 18 wine bottles  
Double doors, 6-bottles upper&12-bottles lower  
LED display with easy touch buttons  
Temperature range from 7-18°C upper/11-18°C lower  
Auto defrost  
Double pane glass doors  
Soft interior lighting with ON/OFF switch  
No compressor, super low noise  
No vibration-bottle sediment is not disturbed  
No refrigerant, environmental friendly  
Unit dimension: W254\*D505\*H875  
Packing dimension: W295\*D555\*H920  
Loading quantity:  
162pcs/20'; 340pcs/40'; 429pcs/40HQ  
Approval: CB, CE, GS, RoHS, ETL





## KWD-21T

70L dual zones for loading of 21 wine bottles  
6-bottles upper & 15-bottles lower  
LED display with touch sensitive keys  
Temperature range from 7~18°C for upper zone,  
and 11~18°C for lower zone  
Double pane glass door with stainless steel handle  
Auto defrost  
Soft interior lighting with ON/OFF switch  
No compressor, super low noise  
No vibration-bottle sediment is not disturbed  
No refrigerant, environmental friendly  
Unit dimension: W345\*D505\*H803  
Packing dimension: W400\*D570\*H852  
Loading quantity: 145pcs/20'; 320pcs/40'; 359pcs/40HQ  
Approval: CB, CE, GS, RoHS, ETL



## KWD-21C

70L dual zones for loading of 21 wine bottles  
6-bottles upper & 15-bottles lower  
LED display with touch sensitive keys  
Temperature range from 7~18°C for upper zone,  
and 11~18°C for lower zone  
Double pane glass door  
Auto defrost  
Soft interior lighting with ON/OFF switch  
No compressor, super low noise  
No vibration-bottle sediment is not disturbed  
No refrigerant, environmental friendly  
Unit dimension: W345\*D505\*H803  
Packing dimension: W400\*D570\*H852  
Loading quantity: 145pcs/20'; 320pcs/40'; 359pcs/40HQ  
Approval: CB, CE, GS, RoHS, ETL



## KWD-21C1

70L dual zones for loading of 21 wine bottles  
6-bottles upper & 15-bottles lower  
Inside LED display with easy touch buttons  
Temperature range from 7~18°C for upper zone,  
and 11~18°C for lower zone  
Double pane glass door with stainless steel handle  
Auto defrost  
Soft interior lighting with ON/OFF switch  
No compressor, super low noise  
No vibration-bottle sediment is not disturbed  
No refrigerant, environmental friendly  
Unit dimension: W345\*D505\*H803  
Packing dimension: W400\*D570\*H852  
Loading quantity:  
145pcs/20'; 320pcs/40'; 359pcs/40HQ  
Approval: CB, CE, GS, RoHS, ETL



## KWD-21CD

70L dual zones for loading of 21 wine bottles  
Double doors, 6-bottles upper & 15-bottles lower  
LED display with touch sensitive keys  
Temperature range from 7~18°C upper/11~18°C lower  
Auto defrost  
Double pane glass doors with stainless steel handles  
Soft interior lighting with ON/OFF switch  
No compressor, super low noise  
No vibration-bottle sediment is not disturbed  
No refrigerant, environmental friendly  
Unit dimension: W345\*D505\*H803  
Packing dimension: W400\*D570\*H852  
Loading quantity:  
145pcs/20'; 320pcs/40'; 359pcs/40HQ  
Approval: CB, CE, GS, RoHS, ETL



# 24 Bottles Series



## KWD-24CD

68L side by side for loading of 24 wine bottles  
 Double doors, 12-bottles left&12-bottles right  
 LED display with touch sensitive keys  
 Temperature range from 7~16℃ left/11~16℃ right  
 Auto defrost  
 Double pane glass doors with stainless steel handles  
 Soft interior lighting with ON/OFF switch  
 No compressor, super low noise  
 No vibration-bottle sediment is not disturbed  
 No refrigerant, environmental friendly  
 Unit dimension: W505\*D515\*H625  
 Packing dimension: W560\*D565\*H680  
 Loading quantity: 90pcs/20'; 189pcs/40'; 252pcs/40HQ  
 Approval: CB, CE, GS, RoHS, ETL

# 27 Bottles Series

## KWD-27C



## KWD-27T



90L dual zones for loading of 27 wine bottles  
 9-bottles upper&18-bottles lower  
 LED display with touch sensitive keys  
 Temperature range from 7~18℃ for upper zone, and 11~18℃ for lower zone  
 Double pane glass door  
 Auto defrost  
 Soft interior lighting with ON/OFF switch  
 No compressor, super low noise  
 No vibration-bottle sediment is not disturbed  
 No refrigerant, environmental friendly  
 Unit dimension: W345\*D505\*H985  
 Packing dimension: W400\*D570\*H1035  
 Loading quantity: 120pcs/20'; 248pcs/40'; 291pcs/40HQ  
 Approval: CB, CE, GS, RoHS, ETL



## KWS-30T

90L for loading of 30 wine bottles  
LED display with touch sensitive keys  
Temperature range from 7~18℃  
Double pane glass door with stainless steel handle  
Auto defrost  
Soft interior lighting with ON/OFF switch  
No compressor, super low noise  
No vibration-bottle sediment is not disturbed  
No refrigerant, environmental friendly  
Unit dimension: W345\*D505\*H985  
Packing dimension: W400\*D570\*H1035  
Loading quantity:  
120pcs/20'; 248pcs/40'; 291pcs/40HQ  
Approval: CB, CE, GS, RoHS, ETL

## KWS-30C

90L for loading of 30 wine bottles  
LED display with touch sensitive keys  
Temperature range from 7~18℃  
Double pane glass door  
Auto defrost  
Soft interior lighting with ON/OFF switch  
No compressor, super low noise  
No vibration-bottle sediment is not disturbed  
No refrigerant, environmental friendly  
Unit dimension: W345\*D505\*H985  
Packing dimension: W400\*D570\*H1035  
Loading quantity:  
120pcs/20'; 248pcs/40'; 291pcs/40HQ  
Approval: CB, CE, GS, RoHS, ETL

